

Calderys mold flux feeder for quality improvement



BACKGROUND
Customers needs



CONCEPT
Calderys solution



SUMMARY
Recap of
the solution



RESULTS
Concrete
benefits



The background situation

Calderys was approached by a customer to help improve quality on a bloom caster. The flux was fed to the mold with a feeding device, but the rate of control was adjusted by the operators. Testing verified high variability in flux thickness.

The request from the customers

High variability in the flux thickness affects the flux performance. Operator preference in control also brought an additional unknown to the process.

The customer recognized the need to improve the flux thickness control in order to have stability in the process with an improvement in quality.





Analysis of the customer request

Calderys visited the site to evaluate customer practices, caster layout and operation.

Testing was performed before implementation of design and applied technology selection.

Description of the solution developed by Calderys

Calderys provided a custom solution to fit the caster, and integrate with the customer's operating system

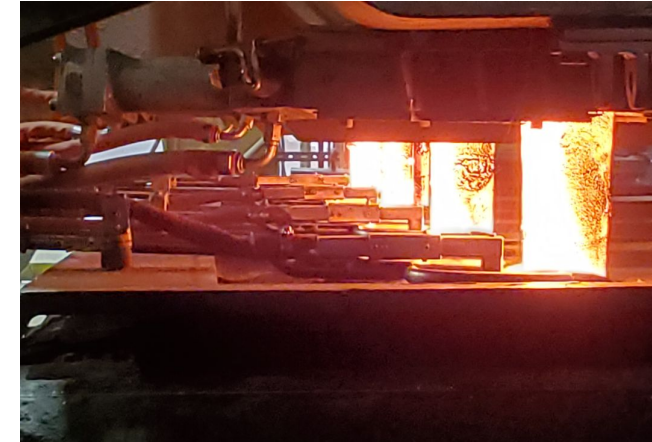
Full project support for installation, integration and training was provided.



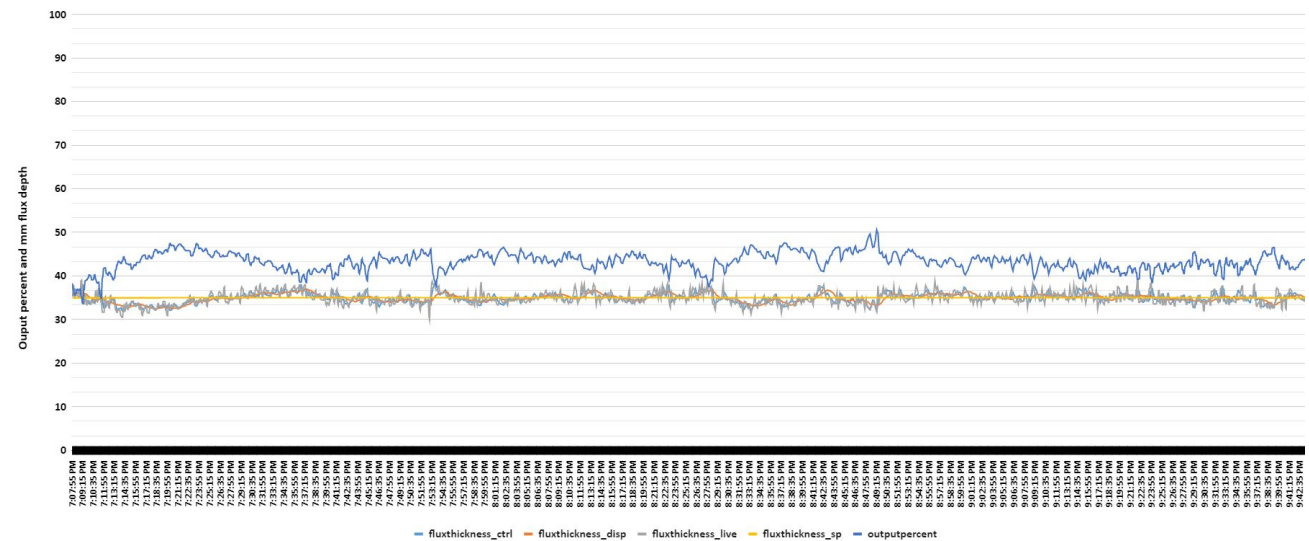


Benefits brought by the solution

- **30% improvement** is surface defects proven with electromagnetic inspection
- **Safer conditions for operators**, not needing to access the hazardous area of the caster
- **Full control of mold flux feeding**, known operational stability
- **Reliable equipment with no downtime**
- **Best practice continuous feeding** developed by Calderys
- **Continuous support** from local Calderys team



180 Square Billet 3/8/22





Product presentation

Calderys Mold Flux Feeding Systems were developed specifically for the steel industry.

The best in practice feeding has been designed to deliver improvement in quality, process stability, and operator safety

Calderys has the know how in feeders and mold flux to bring the best solution to the continuous casting process

Services - Expertises

Calderys has a dedicated department to support design, engineering and installation of feeding equipment.

- Leader in feeding equipment, with 150+ installations worldwide
- Over 25 years of feeding equipment design and experience, proven and reliable
- Continuous development to support our customers increasing quality needs



Thank you for your attention

Visit www.calderys.com for more information

or connect with us:



www.linkedin.com/company/calderys/



www.facebook.com/calderys/

